



BETTER BROADBAND FOR OXFORDSHIRE

Connecting homes and businesses



Better Broadband for Oxfordshire is a partnership between Oxfordshire County Council, BT and Broadband Delivery UK (BDUK) that will ensure over 90% of Oxfordshire will be able to order superfast broadband (above 24mbps) by the end of 2015.

What we're aiming for:

- 90% of Oxfordshire premises have access to fibre enabled broadband by December 2015
- 95% of Oxfordshire premises to have access to fibre enabled broadband by December 2016

The programme is currently delivering ahead of schedule, with **47 fibre broadband cabinets** out of a planned 300 already 'live' across West Oxfordshire, South Oxfordshire, Cherwell and Vale of White Horse districts. An estimated **8,600** homes and business premises can now order Next Generation Access broadband services.

Did you know? When fibre enabled broadband is available, you need to contact your internet service provider (ISP) to request an upgrade. Don't forget to compare packages with different ISPs.

Where we've already enabled cabinets

Exchange Area	Cabinet Number	Covering parts of these communities
Carterton	15, 16, 22	Alvescot, Black Bourton, Carterton, RAF Brize Norton
Chipping Norton	9	Salford
Enstone	3	Enstone
Eynsham	2, 3, 5, 6, 7, 10, 12	Eynsham, Cassington
Freeland	1, 2, 3, 4, 5, 6, 7, 9	North Leigh, Long Hanborough, Freeland
Woodstock	1, 3, 4, 6, 8, 9, 10	Woodstock, Bladon, Blenheim, Wootton
Witney	6, 13, 18, 30, 33, 35, 38, 53, 55	Witney, Hailey
Wallingford	4, 5, 7, 8, 9, 11, 18, 22, 27	Brightwell-cum-Sotwell, RAF Benson, Benson, Ewelme, Wallingford, Ibsden, Crowmarsh
Didcot	27, 28	Didcot





BETTER BROADBAND FOR OXFORDSHIRE

Connecting homes and businesses

More cabinets coming soon!

By December 2014 we'll also have enabled a further 100 cabinets, serving parts of the following parishes: Abingdon, Ardington, Appleton-with-Eaton, Ascott-Under-Wychwood, Benson, Besselsleigh, Bladon, Bletchingdon, Boars Hill, Botley, Charney Bassett, Childrey, Chilton, Cholsey, Clifton Hampden, Combe, Crowmarsh Gifford, Culham, Cumnor, Didcot, East Challow, East Hanney, East Hendred, Faringdon, Farmoor, Finstock, Forest Hill with Shotover, Grove, Hampton Poyle, Harwell, Holton, Horspath, Kennington, Kingston Bagpuize with Southmoor, Lockinge, Longworth, Marcham, Milton Under Wychwood, Milton, Moulsoford, North Hinksey, Old Marston, Oxford, Radley, Ramsden, Risinghurst, Shrivenham, South Hinksey, Southmoor, Sparsholt, Stanton St John, Steventon, Stonesfield, Sunningwell, Sutton Courtenay, Wantage, Watchfield, Waterperry with Thame, West Hanney, West Hendred, Weston on the Green, Wheatley, Woodstock, Wootton.

By the end of the programme we will have delivered at least 300 cabinets. If you can't see your area in the list above, don't worry! Use our online maps to find out more - <http://www.betterbroadbandoxfordshire.org.uk/postcode-map>

Bridging the gap

In addition to our commitment to providing access to superfast broadband to 64,500 of Oxfordshire's homes and businesses by the end of 2015, we are collaborating with the Oxfordshire district councils to extend coverage further. We have been successful in our application to BDUK for additional funding, which has been match-funded by contributions from South Oxfordshire, Cherwell and Vale of White Horse district councils. This additional funding is currently being incorporated into our plans in these districts, and we anticipate an updated delivery plan including the additional coverage by December 2014. West Oxfordshire District Council is developing plans for areas not included in the Better Broadband project, aiming to bring full coverage in West Oxfordshire.

In determining where best to invest the available additional funding, we have taken into account commercial coverage plans by all providers, not just BT, because our programme is designed to plug the gaps not filled commercially. If another provider subsequently decides to offer services in areas that we have already pledged to deliver in, this will not alter our plans.

Investment Facts

- South Oxfordshire District Council is investing £1m into the Better Broadband for Oxfordshire programme
- Vale of White Horse District Council is investing £0.25m into the programme
- Cherwell District Council is investing £0.5m into the programme
- Oxfordshire County Council is investing a further £0.2m (in addition to £11m already invested)
- Each of these amounts will be match funded by BDUK, providing a total of £3.9m committed funding
- West Oxfordshire District Council is investing £1.6m in a separate project to bring full coverage to its district
- Potential £2m Local Enterprise Partnership funding (likely matched by BDUK) for Enterprise Zone and business parks for Ultrafast/Superfast coverage



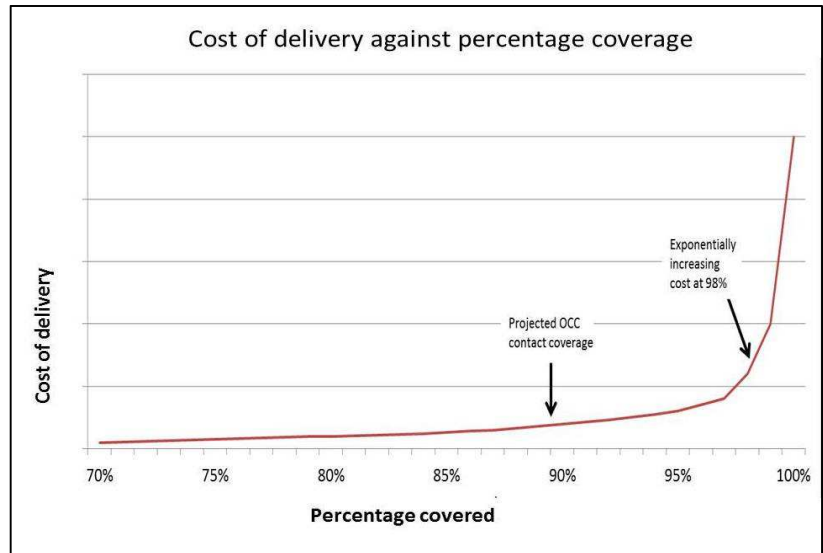
BETTER BROADBAND FOR OXFORDSHIRE

Connecting homes and businesses

Beyond 95%

As the adjacent graph shows, the incremental cost of delivering fibre based next generation broadband to the final 5% of premises rises incrementally. This is due to a number of reasons:

- These areas are typically much more remote
- These areas have typically much lower density of dwellings
- These areas are seldom near fibre backhaul infrastructure
- The distance between communities is typically greater.



Options under consideration for addressing this coverage (outside of West Oxfordshire) include:

- Community-driven initiatives are under consideration, whereby local communities raising funds might be eligible for a match-fund from the district council to install a privately funded solution. In many cases, where BT is extending the fibre network as part of the Better Broadband programme, there may be lower costs than currently due to the proximity to fibre.
- The BT contract has two 'clawback' mechanisms. Both efficient delivery of the programme and good take-up of deployed services are able to generate additional funds to be reinvested into the programme to extend coverage.
- We will continue to appraise new developments and technologies. In particular, we are monitoring mobile providers' plans for deployment of 4G in Oxfordshire over the next two years.

Take-up is important. The BT contract is modelled on 20% take up of fibre-enabled broadband services. Each 1% beyond 20%, from any service provider, accrues significant further investment opportunity.

What are the benefits of fibre-enabled broadband?

Simultaneous Use

With better broadband the whole family can be online - streaming video, playing games, using social media and doing homework - all at the same time.

Maintain Independence

A fast, reliable internet service means those who are elderly, disabled or or unwell can continue to live at home for longer.

Cloud Computing

Host software and data remotely, giving you access to your information from anywhere when connected to the internet.

Better Communication

Connect with associates from all over the world using video conferencing, helping you to reduce travel, save money and maintain relationships.





BETTER BROADBAND FOR OXFORDSHIRE

Connecting homes and businesses

Coverage – how and why?

The deployment plan is based on the most efficient and economical solution which will enable the greatest coverage possible with the funding available. No geographical priorities were set by the county council to make sure that the public sector funding had the greatest impact for as many local people and businesses as possible. The additional funding will be modelled in the same way.

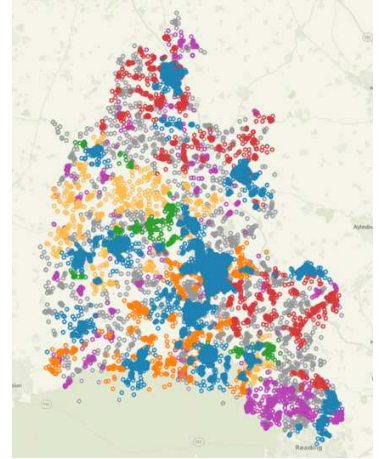
As a project team, we work closely with our colleagues in BT to make sure that we are delivering fibre-enabled broadband to the county in the most efficient way we can. We constantly assess areas where we can make savings against the predicted costs of delivery, for example by reusing fibre cabling where possible. We also work closely with our Highways department to minimise planning challenges and make sure that we locate cabinets in the most appropriate and safe locations, with sensitivity to local concerns. Sometimes physical surveys can bring to light issues that mean the actual cost of delivering a cabinet would be significantly higher than predicted. When this happens our project team reacts quickly and flexibly to adapt the plan and find an alternative, to make sure that we continue to provide value for money for the tax payer. These 'in-flight' changes greatly increase the likelihood of being able to add further coverage as the programme progresses – despite adding a layer of complexity to providing concrete rollout information!

Our data – help yourselves!

To help people find out for themselves whether they are part of Better Broadband for Oxfordshire and likely timescales for delivery we have created two maps – the Postcode Map (see box to the right) and the Cabinets Map, mentioned previously. Both of these can be accessed on our website at <http://www.betterbroadbandoxfordshire.org.uk/postcode-map>.

Please note - the only means of providing map data is by using postcode areas which do not always map directly to cabinet locations. The icons on the postcode map represent the geographic centre of a postcode. Some postcodes are served by more than one cabinet, and sometimes not all cabinets within a postcode are enabled. Not all premises being served by the fibre-enabled cabinet will necessarily be able to order superfast speeds (above 24mbps). Premises will be able to access a range of speeds – some will get superfast broadband and others will be able to get anywhere between 2Mbps and 24Mbps, depending on distance from the cabinet.

The Postcode Map



You can find out where your parish falls within our current deployment plan by using our interactive postcode map, available online at <http://www.betterbroadbandoxfordshire.org.uk/postcode-map>. The map is updated monthly to reflect the most current information from BT.

However, as with any programme of this size, the plans for the current scope of coverage may change or be delayed as BT deploy the physical infrastructure work necessary to deploy fibre broadband across the county.